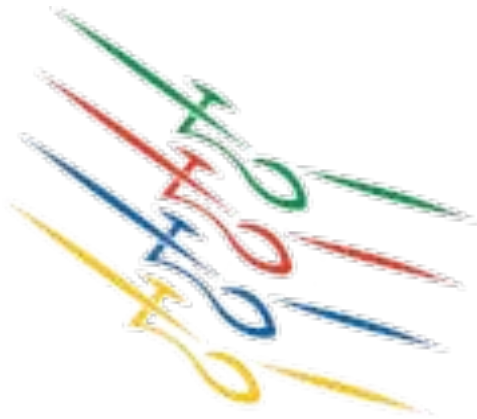


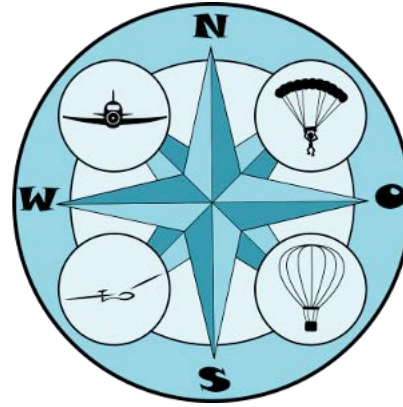
45th Women's Soaring Seminar Uebersberg, Pfullingen

Germany
July 3rd through 7th, 2023



Glider Port Info

<https://www.uebersberg.de/>



Uebersberg Glider Port has two landing fields on grass and is only licensed for gliders, motor-gliders, and ultralight aircrafts.
Measurements.

- RW: 26 1020x30m
- RW: 08 785x30m

Nearest international airports :
Stuttgart (STR); Frankfurt (FRA);
Munich (MUC)



The City of Reutlingen is near the airport.



Soaring Conditions in the Region

- The Swabian Alb is a limestone – mountain range that spreads out about 140 miles between black forest and the upper Neckar in the northeast and the Danube in the southeast.
- The ridge mountains range from 400 to 1100 m in elevation and provide excellent thermaling conditions. Cross country flights from here to the black forest (quite frequently!), along the Danube-Valley to the east, or sometimes even to the Alps are possible.

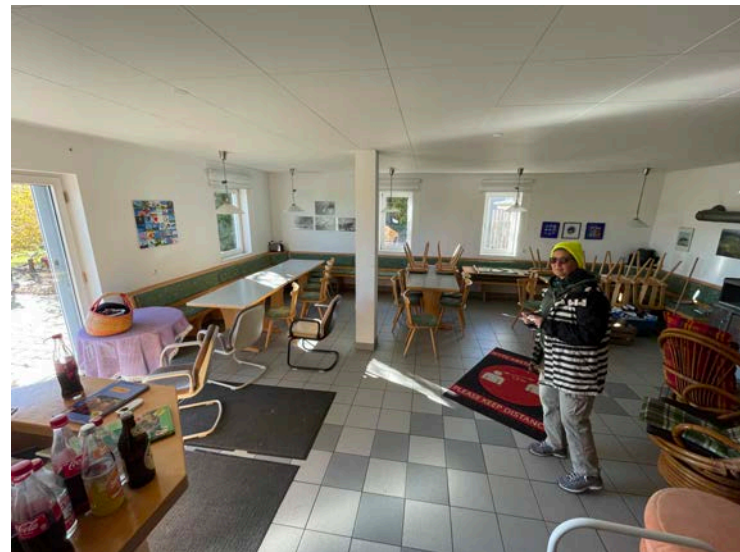


Winch Launching & Aero Tow are available





Inside the Hangar - Housing





Contact Information

Ulrike Franz & Heinrich Beutel

WSPA Members and Members of the Luftsportverein Reutlingen.

eule@ulrikefranz.de

+49 151 1167 8369

Heinrich.Beutel@gmx.de

+49 151 5155 0488

Friedrich-Ebert-Strasse 9

72762 Reutlingen,
Germany

